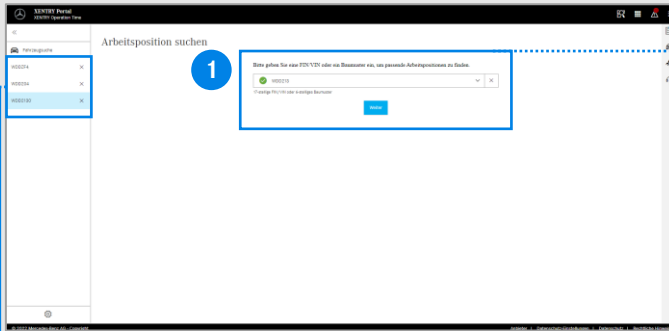




Help Card: XENTRY Operation Time

XENTRY Operation Time (XOT) sets a new standard when searching for operation items and times, based on FIN/VIN-specific search results. Enjoy the benefit of the new product design, that enables a simple and smooth work procedure in only a few screens, even on mobile devices.

Start



Navigation bar

In the left navigation bar, you can see the FIN/VIN number of the order currently open. If you have processed more than one order, the navigation bar shows all the orders.

Enter FIN/VIN or model designation

You can start XOT easily and quickly by entering the FIN/VIN or a model designation. After this, click on Continue.



To use XOT, **dedicated application permissions** are required. Further information about this is available from your GEMS Market Administrator.

Overview

This takes you to the XOT start page. If you have started XOT when in an integrated application, this will take you straight to this view

Header

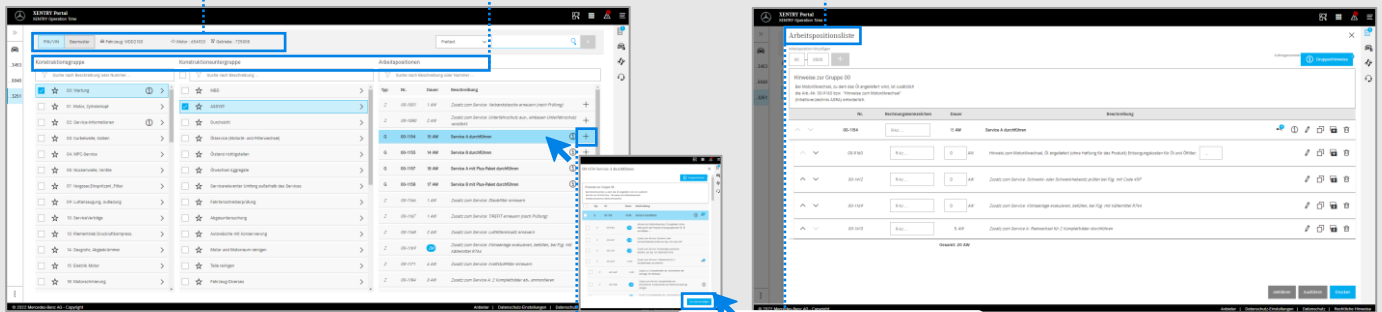
Contains the most-important vehicle information.

Search results

Design group display. When selected, the respective design groups and operation items are shown.

List of operation items

After selecting the relevant operation items, XOT enables seamless transfer of the items in the list of operation items.



User-friendliness

Using ★, you can define Favorites in each of the groups. The "i Button" provides additional information.

List of operation items

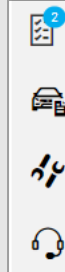
Clicking on "+" or opening the operation item and then clicking on "Add to list", adds the operation item to the list of operation items (shortcut menu at top right).

Navigation bar



Clicking on the Gear symbol opens XOT Settings, which then appear on the right side of the screen. Depending on your particular user permissions, you can adapt the settings here for the **time unit (WU or H)**, the **region (domestic or international)** and the **export format (XML or XFR)**. You can close Settings using X in the top right corner.

Shortcut menu



Launching the **List of operation items** (see also above).

Vehicle data shows the vehicle information made available by VeDoc, including an extended vehicle data card.

Local operation items, to launch linked items from the DMS.

If you have any feedback or questions, please use the **Microphone button**. You will then be forwarded automatically to XSF.